



# GAT MONTHLY MEMBERSHIP PROGRESS REPORT

Results as of: 4/30/2023

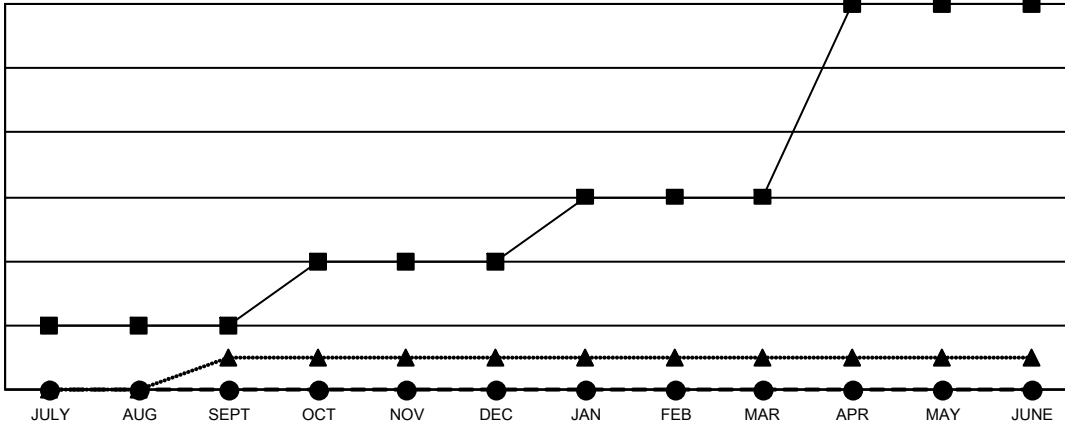
Multiple District 27

LOCATION: WISCONSIN

Clubs			
RESULTS FOR 2022-2023			
QUARTER	NEW CLUB GOAL	NEW CLUBS	DROPPED CLUBS
JULY/AUG/SEPT	2	0	1
OCT/NOV/DEC	2	0	0
JAN/FEB/MAR	2	0	0
APR/MAY/JUNE	6	0	0

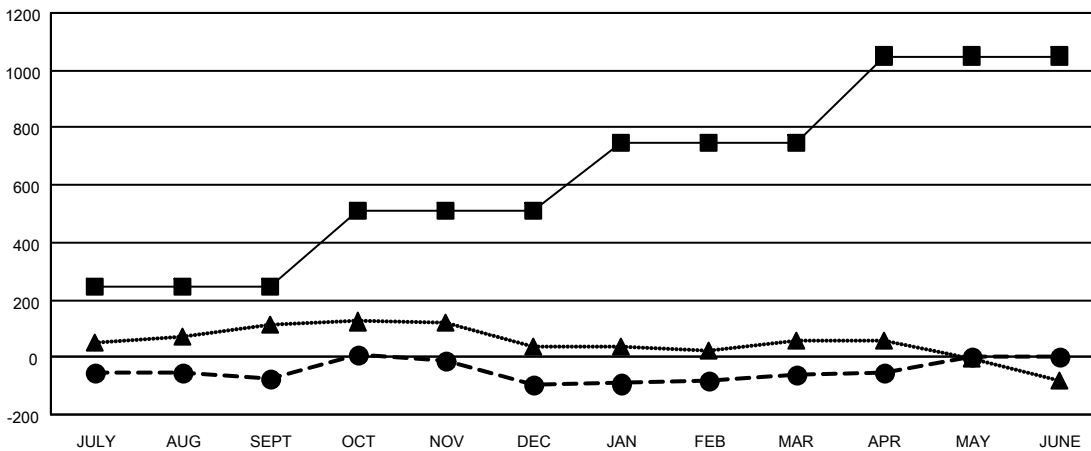
Members			
RESULTS FOR 2022-2023			
QUARTER	MEMBER GROWTH NET GOAL	MEMBER GROWTH ACTUAL	DROPPED MEMBERS ACTUAL (including transfers)
JULY/AUG/SEPT	243	365	396
OCT/NOV/DEC	265	380	377
JAN/FEB/MAR	241	408	335
APR/MAY/JUNE	301	121	109

GOALS AND ACTUAL NEW CLUBS CUMULATIVE



- CURRENT YEAR GOALS FOR NEW CLUBS
- CURRENT YEAR ACTUAL NEW CLUBS
- ▲- LAST YEAR ACTUAL NEW CLUBS

GOALS AND ACTUAL MEMBERS CUMULATIVE



- MEMBER GROWTH NET GOAL
- MEMBER GROWTH ACTUAL
- ▲- LAST YEAR MEMBERSHIP ACTUAL

DROPPED CLUBS: 1	
<b>DROPPED MEMBERS</b>	
DECEASED	195
CLUB CANCELLED	11
OTHER	1,011
<b>TOTAL</b>	<b>1,217</b>

331 CLUBS OF 505 ADDED 1 OR MORE NEW MEMBERS

[CLICK HERE FOR CUMULATIVE MEMBERSHIP DATA](#)

GENDER DISTRIBUTION	
MALE	11,975 (71.28%)
FEMALE	4,823 (28.71%)
NON BINARY	0 (0.00%)
PREFER NOT TO ANSWER	2 (0.01%)
<b>TOTAL FAMILY UNIT MEMBERS</b>	<b>3,545</b>
<b>FAMILY MEMBERS PAYING HALF DUES</b>	<b>1,799</b>